



West Midlands
Cancer Intelligence Unit

Key Cancer
Incidence and Mortality Data
2009

Report No. R11/01

February
2011

© February 2011, West Midlands Cancer Intelligence Unit

The information contained within this report remains the property of the WMCIU and should not be reproduced or circulated without prior written permission.

CONTENTS

Key Points	1
Section 1: Incidence and mortality in 2009 in the West Midlands.....	2
Section 2: Incidence and mortality in 2009 in the West Midlands, by geographic area.....	4
Section 3: Ten-year trends in incidence and mortality in the West Midlands.....	6
Section 4: One and five-year relative survival in the West Midlands.....	7
Appendix 1: Cancer site groupings.....	9
Appendix 2: Incidence and mortality in 2009 in the West Midlands by individual ICD-10 cancer site code.....	10

Key Points

Cancer Incidence and Mortality in the West Midlands in 2009

There were 14,011 cases of invasive cancer¹ diagnosed in males in the West Midlands in 2009, and 13,319 cases diagnosed in females. This gives a crude incidence rate of 525 cases per 100,000 population in men, and a rate of 483 cases per 100,000 population in women.

There were 7,305 deaths due to cancer in males in the West Midlands in 2009, and 6,340 deaths due to cancer in females. This gives a crude mortality rate of 273 deaths per 100,000 population in men, and a rate of 230 deaths per 100,000 population in women.

The most common cancers² diagnosed in men were prostate cancer (3,610 cases in 2009), bowel cancer (2,074 cases), and lung cancer (1,995 cases). These were also the leading causes of death due to cancer in men, with 1,740 deaths due to lung cancer, 951 deaths due to prostate cancer, and 934 deaths due to bowel cancer.

The most common cancers in women were breast cancer (4,222 cases in 2009), gynaecological cancers (1,756 cases), bowel cancer (1,711 cases) and lung cancer (1,364 cases). These were also the leading causes of death due to cancer in women, with 1,135 deaths due to lung cancer, 1,075 deaths due to breast cancer, 808 deaths due to bowel cancer and 654 deaths due to gynaecological cancer.

Appendix 1 lists the cancer sites included in the cancer groupings; Appendix 2 breaks down and presents the individual ICD-10 code data.

Geographical variations

There are noticeable differences in cancer incidence and mortality between Local Authorities. The majority of these are not large enough to be statistically significant using only one year's data. However, Stoke-on-Trent LA has significantly high age-standardised³ incidence and mortality rates for both men and women in 2009 compared to the West Midlands.

Further details of geographical variation of cancer incidence, mortality and survival can be found in the WMCIU's Local Authority Cancer Profiles, available at www.wmciu.nhs.uk.

Trends over time

The number of cases of cancer and the crude incidence rates continue to increase annually as the population of the West Midlands ages. In 2000 there were only 24,242 cases of cancer, but by 2009 this has risen by 13% to 27,330. However, age standardised incidence rates have remained relatively constant over the decade, indicating that the risk of developing cancer has not changed.

Despite the increase in incidence, the number of deaths due to cancer has remained steady over the decade, with 13,430 deaths in 2000 and 13,645 deaths in 2009. The age standardised mortality rate has fallen significantly in both men and women.

One and five-year survival in the West Midlands

Relative survival rates vary greatly with cancer site. Five-year relative survival rates are over 80% for cancers such as melanoma skin cancer, breast cancer, prostate cancer and cancers of the male genitalia. However, 5-year relative survival rates are under 15% for sites such as lung, hepatobiliary & pancreas and upper gastro-intestinal cancers.

¹ All invasive malignant neoplasms C00-C97 excluding non-melanoma skin, C44

² Grouping ICD-10 groups into similar sites, see Appendix 1

³ Rates which correct for the changing population structure.

Section 1: Incidence and mortality in 2009 in the West Midlands

Tables 1.1 and 1.2 contain for males and females respectively, numbers, crude rates, and age-standardised incidence and mortality rates per 100,000 population in the West Midlands by cancer site groupings in 2009. The individual cancer sites included in each cancer grouping are detailed in Appendix 1 (Table A.1). Incidence and mortality data for individual cancer sites are provided in Appendix 2 (Table A.2 [males] and Table A.3 [females]).

Table 1.1: Incidence and mortality in 2009, by cancer groupings, West Midlands, males

Cancer site grouping	Incidence			Mortality		
	No of cases	Crude rate	Age-standardised rate (LCI - UCI)	No of deaths	Crude rate	Age-standardised rate (LCI - UCI)
Head & Neck	609	23	20 (18 - 21)	198	7	6 (5 - 7)
Upper Gastro-intestinal	967	36	28 (26 - 30)	839	31	24 (22 - 26)
Bowel	2,074	78	59 (57 - 62)	934	35	26 (24 - 27)
Hepatobiliary & Pancreas	570	21	17 (15 - 18)	557	21	16 (14 - 17)
Lung	1,995	75	56 (54 - 59)	1,740	65	48 (46 - 51)
Skin - malignant melanoma	463	17	15 (13 - 16)	103	4	3 (2 - 4)
Breast - invasive	28	1	1 (1 - 1)	5	<1	<1 (<1 - <1)
Male genitalia	266	10	10 (9 - 11)	22	1	1 (<1 - 1)
Urological	1,065	40	30 (29 - 32)	503	19	14 (13 - 15)
Prostate	3,610	135	104 (100 - 107)	951	36	24 (23 - 26)
Brain & Central Nervous System	250	9	8 (7 - 9)	204	8	6 (5 - 7)
Haematological	1,349	51	41 (39 - 43)	579	22	16 (15 - 17)
Other (all invasive malignancies not grouped)	765	29	22 (20 - 24)	670	25	18 (17 - 20)
All C00-C97 ex C44	14,011	525	410 (403 - 417)	7,305	273	202 (198 - 207)

Table 1.2: Incidence and mortality in 2009, by cancer groupings, West Midlands, females

West Midlands, 2009, females						
Cancer site grouping	Incidence			Mortality		
	No of cases	Crude rate	Age-standardised rate (LCI - UCI)	No of deaths	Crude rate	Age-standardised rate (LCI - UCI)
Head & Neck	361	13	11 (10 - 12)	93	3	2 (2 - 3)
Upper Gastro-intestinal	483	18	11 (10 - 12)	369	13	8 (7 - 9)
Bowel	1,711	62	41 (39 - 43)	808	29	17 (16 - 18)
Hepatobiliary & Pancreas	568	21	13 (12 - 14)	567	21	12 (11 - 13)
Lung	1,364	49	33 (31 - 35)	1,135	41	26 (25 - 28)
Skin - malignant melanoma	443	16	13 (12 - 14)	78	3	2 (2 - 3)
Breast - invasive	4,222	153	123 (119 - 127)	1,075	39	26 (24 - 28)
Gynaecological	1,756	64	51 (48 - 53)	654	24	16 (14 - 17)
Urological	527	19	12 (11 - 14)	278	10	6 (5 - 7)
Brain & Central Nervous System	187	7	5 (5 - 6)	147	5	4 (3 - 4)
Haematological	1,010	37	26 (24 - 28)	472	17	10 (9 - 11)
Other (all invasive malignancies not grouped)	687	25	16 (14 - 17)	664	24	14 (13 - 15)
All C00-C97 ex C44	13,319	483	354 (348 - 360)	6,340	230	142 (139 - 146)

Figure 1.1 shows age-standardised incidence and mortality rates per 100,000 population, for males in the West Midlands by cancer site grouping in 2009.

Figure 1.1: Incidence and mortality in 2009, by cancer groupings, males, West Midlands

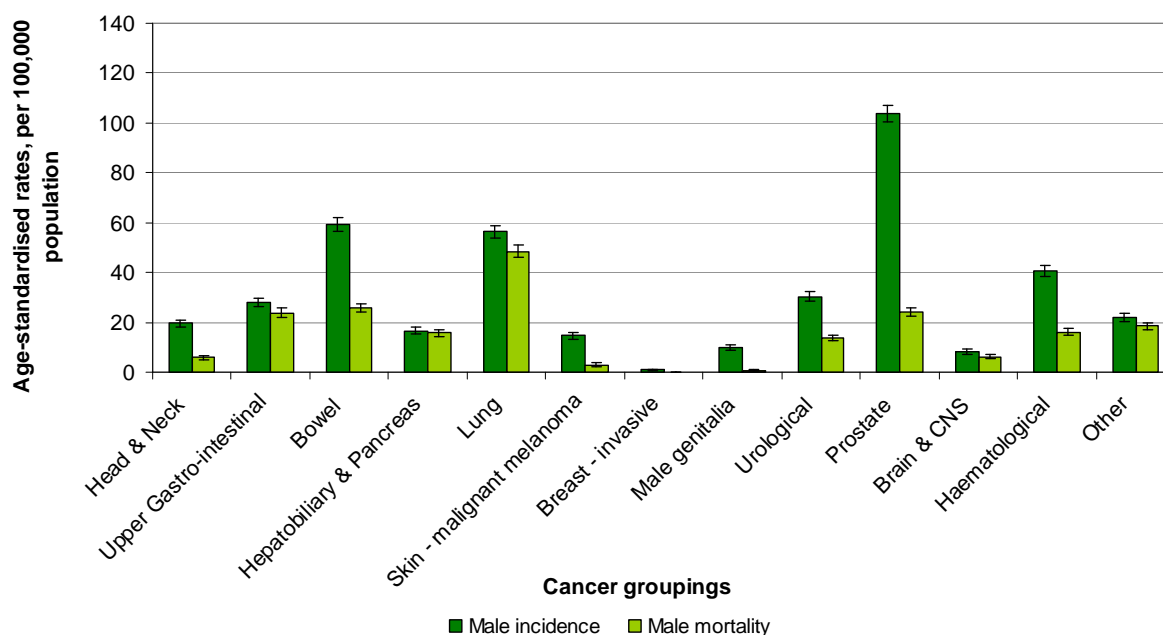
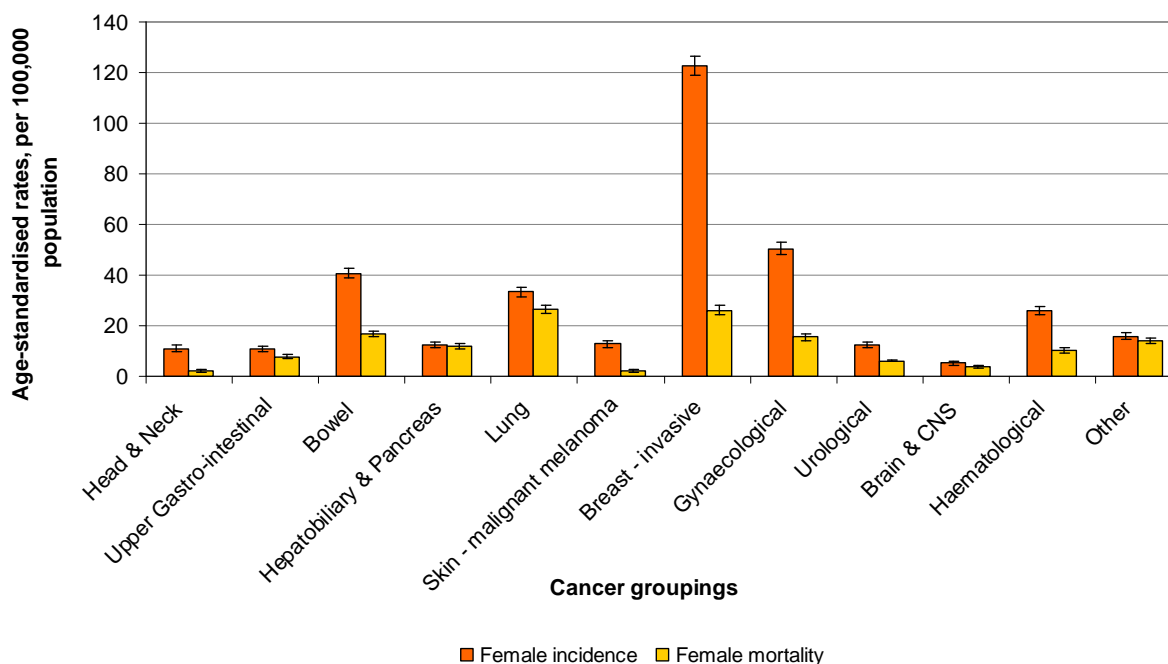


Figure 1.2 shows age-standardised incidence and mortality rates per 100,000 population, for females in the West Midlands by cancer site grouping in 2009.

Figure 1.2: Incidence and mortality in 2009, by cancer groupings, females, West Midlands



Section 2: Incidence and mortality in 2009 in the West Midlands, by geographic area

Tables 2.1 and 2.2 contain numbers, crude rates and age-standardised incidence and mortality rates per 100,000 population, for males and females in West Midlands Local Authorities in 2009.

Table 2.1: Incidence and mortality in 2009, all invasive malignant neoplasms, excluding non-melanoma skin cancer (C00-C97 ex C44) by Local Authority, males

Local Authority	All invasive malignant neoplasms, excluding non-melanoma skin cancer (ICD-10 C00-C97 excl. C44), West Midlands, males					
	Incidence 2009			Mortality 2009		
	No of cases	Crude rate	Age-standardised rate (LCI - UCI)	No of deaths	Crude rate	Age-standardised rate (LCI - UCI)
Birmingham	2,225	441	441 (422 - 459)	1,125	223	209 (196 - 221)
Coventry	740	474	436 (404 - 468)	374	240	210 (188 - 232)
Dudley	822	545	394 (366 - 421)	447	297	206 (187 - 225)
Herefordshire	500	570	351 (319 - 383)	257	293	170 (149 - 192)
Sandwell	778	548	463 (430 - 496)	445	314	252 (228 - 276)
Shropshire	811	563	365 (339 - 391)	481	334	201 (183 - 220)
Solihull	622	624	448 (412 - 484)	247	248	161 (141 - 182)
Staffordshire	2,276	558	404 (387 - 421)	1,146	281	194 (182 - 205)
Stoke-on-Trent	678	580	472 (436 - 508)	381	326	253 (227 - 279)
Telford & Wrekin	342	428	371 (332 - 411)	219	274	232 (201 - 262)
Walsall	688	552	425 (393 - 458)	362	291	216 (193 - 238)
Warwickshire	1,355	512	375 (355 - 396)	754	285	200 (185 - 214)
Wolverhampton	609	516	418 (384 - 452)	333	282	212 (189 - 236)
Worcestershire	1,565	570	403 (383 - 423)	734	267	176 (163 - 189)
West Midlands	14,011	525	410 (403 - 417)	7,305	273	202 (198 - 207)

Table 2.2: Incidence and mortality in 2009, all invasive malignant neoplasms, excluding non-melanoma skin cancer (C00-C97 ex C44) by Local Authority, females

Local Authority	All invasive malignant neoplasms, excluding non-melanoma skin cancer (ICD-10 C00-C97 excl. C44), West Midlands, females					
	Incidence 2009			Mortality 2009		
	No of cases	Crude rate	Age-standardised rate (LCI - UCI)	No of deaths	Crude rate	Age-standardised rate (LCI - UCI)
Birmingham	2,083	397	357 (341 - 373)	997	190	146 (136 - 156)
Coventry	697	445	358 (330 - 387)	352	225	157 (139 - 175)
Dudley	753	483	333 (308 - 359)	351	225	131 (116 - 146)
Herefordshire	513	561	345 (312 - 378)	236	258	132 (113 - 151)
Sandwell	745	500	394 (364 - 424)	333	223	146 (129 - 163)
Shropshire	785	532	330 (305 - 355)	395	267	141 (125 - 156)
Solihull	565	535	361 (329 - 393)	239	226	128 (110 - 145)
Staffordshire	2,054	488	338 (322 - 353)	981	233	135 (126 - 144)
Stoke-on-Trent	627	514	391 (359 - 423)	353	289	188 (167 - 209)
Telford & Wrekin	346	420	333 (296 - 369)	170	207	148 (125 - 171)
Walsall	647	493	368 (337 - 398)	278	212	134 (117 - 151)
Warwickshire	1,445	534	374 (353 - 394)	682	252	151 (139 - 163)
Wolverhampton	574	476	342 (312 - 372)	318	264	164 (144 - 184)
Worcestershire	1,485	526	354 (335 - 374)	655	232	131 (120 - 141)
West Midlands	13,319	483	354 (348 - 360)	6,340	230	142 (139 - 146)

Tables 2.3 and 2.4 contain numbers, crude rates and age-standardised incidence and mortality rates per 100,000 population, for males and females respectively in cancer networks or partial cancer networks within the West Midlands.

Table 2.3: Incidence and mortality in 2009, all invasive malignant neoplasms, excluding non-melanoma skin cancer (C00-C97 ex C44), by cancer network, males

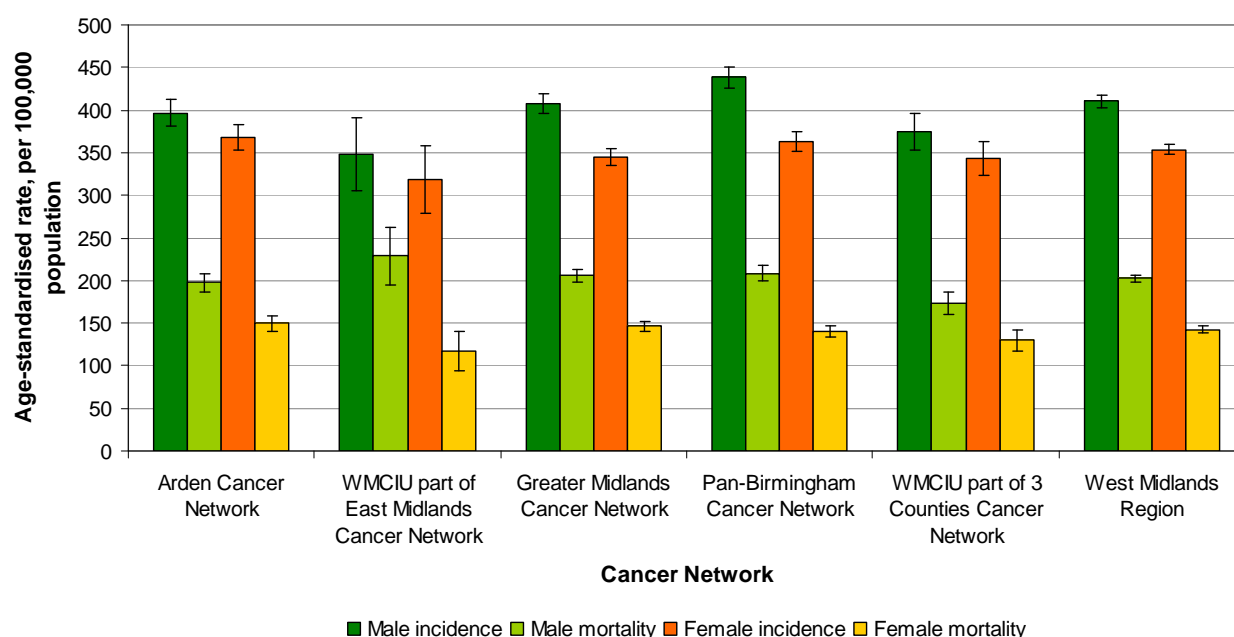
All invasive malignant neoplasms, excluding non-melanoma skin cancer (ICD-10 C00-C97 excl. C44), West Midlands, males						
Geographical Area	Incidence 2009			Mortality 2009		
	No of cases	Crude rate	Age-standardised rate (LCI - UCI)	No of deaths	Crude rate	Age-standardised rate (LCI - UCI)
Arden Cancer Network	2,537	504	396 (381 - 412)	1,329	264	198 (187 - 208)
WMCIU part of East Midlands Cancer Network	265	455	348 (306 - 391)	181	311	229 (195 - 262)
Greater Midlands Cancer Network	5,189	556	408 (397 - 419)	2,768	297	206 (198 - 213)
Pan-Birmingham Cancer Network	4,721	498	438 (425 - 451)	2,381	251	209 (200 - 217)
WMCIU part of 3 Counties Cancer Network	1,299	568	375 (354 - 396)	646	283	173 (160 - 187)
West Midlands Region	14,011	525	410 (403 - 417)	7,305	273	202 (198 - 207)

Table 2.4: Incidence and mortality in 2009, all invasive malignant neoplasms, excluding non-melanoma skin cancer (C00-C97 ex C44), by cancer network, females

All invasive malignant neoplasms, excluding non-melanoma skin cancer (ICD-10 C00-C97 excl. C44), West Midlands, females						
Geographical Area	Incidence 2009			Mortality 2009		
	No of cases	Crude rate	Age-standardised rate (LCI - UCI)	No of deaths	Crude rate	Age-standardised rate (LCI - UCI)
Arden Cancer Network	2,569	502	368 (353 - 383)	1,222	239	150 (141 - 159)
WMCIU part of East Midlands Cancer Network	267	446	319 (278 - 359)	117	195	117 (95 - 140)
Greater Midlands Cancer Network	4,791	499	345 (334 - 355)	2,403	250	146 (140 - 152)
Pan-Birmingham Cancer Network	4,412	445	363 (352 - 375)	2,013	203	140 (133 - 146)
WMCIU part of 3 Counties Cancer Network	1,280	540	343 (323 - 364)	585	247	130 (118 - 141)
West Midlands Region	13,319	483	354 (348 - 360)	6,340	230	142 (139 - 146)

Figure 2.1 shows for males and females, age-standardised incidence and mortality rates per 100,000 population, in cancer networks or partial cancer networks within the West Midlands.

Figure 2.1: Incidence and mortality in 2009, all invasive malignant neoplasms excluding non-melanoma skin cancer (C00-C97 ex C44), by cancer network



Section 3: Ten-year trends in incidence and mortality in the West Midlands

Tables 3.1 and 3.2 contain numbers, crude rates and age-standardised cancer incidence and mortality rates per 100,000 population, for males and females respectively in the West Midlands. Figure 3.1 illustrates these data.

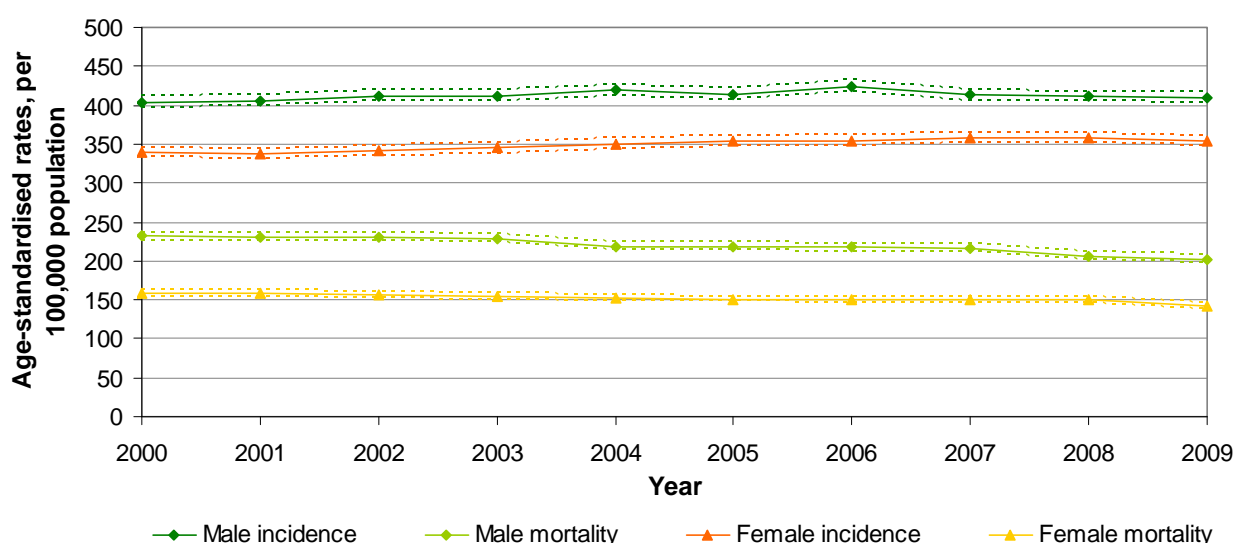
Table 3.1: Ten-year incidence and mortality trends, all invasive malignant neoplasms (C00-C97 excl C44), West Midlands, males

All invasive malignant neoplasms, excluding non-melanoma skin cancer (ICD-10 C00-C97 excl. C44), West Midlands, males							
Year	Incidence			Mortality			
	No of cases	Crude rate	Age-standardised rate (LCI - UCI)	No of deaths	Crude rate	Age-standardised rate (LCI - UCI)	
2000	12,231	471	404 (397 - 411)	7,104	274	232 (227 - 237)	
2001	12,416	478	406 (399 - 413)	7,180	276	231 (225 - 236)	
2002	12,717	490	412 (405 - 420)	7,300	281	231 (226 - 237)	
2003	12,887	495	412 (405 - 419)	7,319	281	229 (223 - 234)	
2004	13,331	510	419 (412 - 426)	7,126	273	218 (213 - 223)	
2005	13,315	507	414 (407 - 421)	7,285	277	219 (214 - 224)	
2006	13,828	525	424 (417 - 431)	7,346	279	218 (213 - 223)	
2007	13,688	517	413 (406 - 420)	7,499	284	217 (212 - 222)	
2008	13,859	521	412 (405 - 418)	7,319	275	206 (202 - 211)	
2009	14,011	525	410 (403 - 417)	7,305	273	202 (198 - 207)	

Table 3.2: Ten-year incidence and mortality trends, all invasive malignant neoplasms (C00-C97 excl C44), West Midlands, females

All invasive malignant neoplasms, excluding non-melanoma skin cancer (ICD-10 C00-C97 excl. C44), West Midlands, females							
Year	Incidence			Mortality			
	No of cases	Crude rate	Age-standardised rate (LCI - UCI)	No of deaths	Crude rate	Age-standardised rate (LCI - UCI)	
2000	12,011	446	340 (333 - 346)	6,326	235	159 (155 - 163)	
2001	11,954	443	338 (331 - 344)	6,438	239	158 (154 - 162)	
2002	12,216	453	342 (336 - 348)	6,466	240	157 (153 - 161)	
2003	12,507	462	345 (338 - 351)	6,470	239	155 (151 - 159)	
2004	12,648	467	351 (344 - 357)	6,380	235	152 (148 - 156)	
2005	12,793	470	353 (347 - 360)	6,362	234	151 (147 - 155)	
2006	13,172	483	355 (348 - 361)	6,390	234	150 (146 - 154)	
2007	13,187	482	358 (352 - 364)	6,549	240	151 (147 - 155)	
2008	13,386	487	358 (351 - 364)	6,603	240	150 (146 - 154)	
2009	13,319	483	354 (348 - 360)	6,340	230	142 (139 - 146)	

Figure 3.1: Ten-year incidence and mortality trends, all invasive malignant neoplasms (C00-C97 excl C44), West Midlands (dotted lines indicate 95% confidence intervals)



Section 4: One and five-year relative survival in the West Midlands

Tables 4.1 and 4.2 contain 1-year and 5-year relative survival for males and females respectively in the West Midlands. One-year relative survival is calculated for cases diagnosed in 2009. Five-year relative survival is calculated for cases diagnosed in 2005. All cases were followed up to the end of 2010.

Table 4.1: One and five-year survival followed up to the end of 2010, West Midlands, males

West Midlands, males		
Cancer site group	Diagnosed 2009	Diagnosed 2005
	One-year relative survival (%) (LCI - UCI)	Five-year relative survival (%) (LCI - UCI)
Head & Neck	83% (79% - 86%)	59% (54% - 64%)
Upper Gastro-intestinal	40% (37% - 44%)	11% (9% - 14%)
Bowel	75% (73% - 78%)	53% (50% - 55%)
Hepatobiliary & Pancreas	27% (23% - 31%)	7% (5% - 10%)
Lung	29% (27% - 32%)	7% (6% - 9%)
Skin - malignant melanoma	100% (97% - 101%)	85% (79% - 89%)
Breast - invasive	104% ⁴ (- - -)	96% (66% - 113%)
Male genitalia	97% (94% - 99%)	92% (87% - 96%)
Urological	74% (71% - 77%)	52% (48% - 57%)
Prostate	97% (96% - 98%)	87% (85% - 89%)
Brain & Central Nervous System	45% (38% - 51%)	23% (17% - 29%)
Haematological	78% (75% - 81%)	58% (54% - 62%)
Other (all invasive malignancies not grouped)	42% (38% - 46%)	17% (14% - 21%)
All (C00-C97 excl. C44)	71% (70% - 72%)	52% (50% - 53%)

Table 4.2: One and five-year survival followed up to the end of 2010, West Midlands, females

West Midlands, females		
Cancer site group	Diagnosed 2009	Diagnosed 2005
	One-year relative survival (%) (LCI - UCI)	Five-year relative survival (%) (LCI - UCI)
Head & Neck	84% (79% - 88%)	72% (65% - 78%)
Upper Gastro-intestinal	39% (34% - 44%)	13% (10% - 17%)
Bowel	74% (71% - 76%)	51% (48% - 54%)
Hepatobiliary & Pancreas	16% (13% - 20%)	8% (5% - 11%)
Lung	32% (29% - 35%)	9% (7% - 11%)
Skin - malignant melanoma	100% (97% - 101%)	91% (87% - 95%)
Breast - invasive	96% (96% - 97%)	84% (83% - 86%)
Gynaecological	83% (81% - 85%)	63% (60% - 66%)
Urological	62% (56% - 66%)	48% (42% - 54%)
Brain & Central Nervous System	44% (36% - 52%)	26% (19% - 33%)
Haematological	76% (72% - 79%)	57% (52% - 61%)
Other (all invasive malignancies not grouped)	36% (31% - 40%)	17% (13% - 21%)
All (C00-C97 excl. C44)	74% (73% - 75%)	58% (57% - 60%)

⁴Male breast cancer survival was better than survival in the general population and so relative survival rates of more than 100% are observed.

Figures 4.1 and 4.2 show for males and females, 1-year and 5-year relative survival respectively, for the West Midlands, by cancer site grouping.

Figure 4.1: One-year relative survival followed up to the end of 2009, West Midlands, males & females

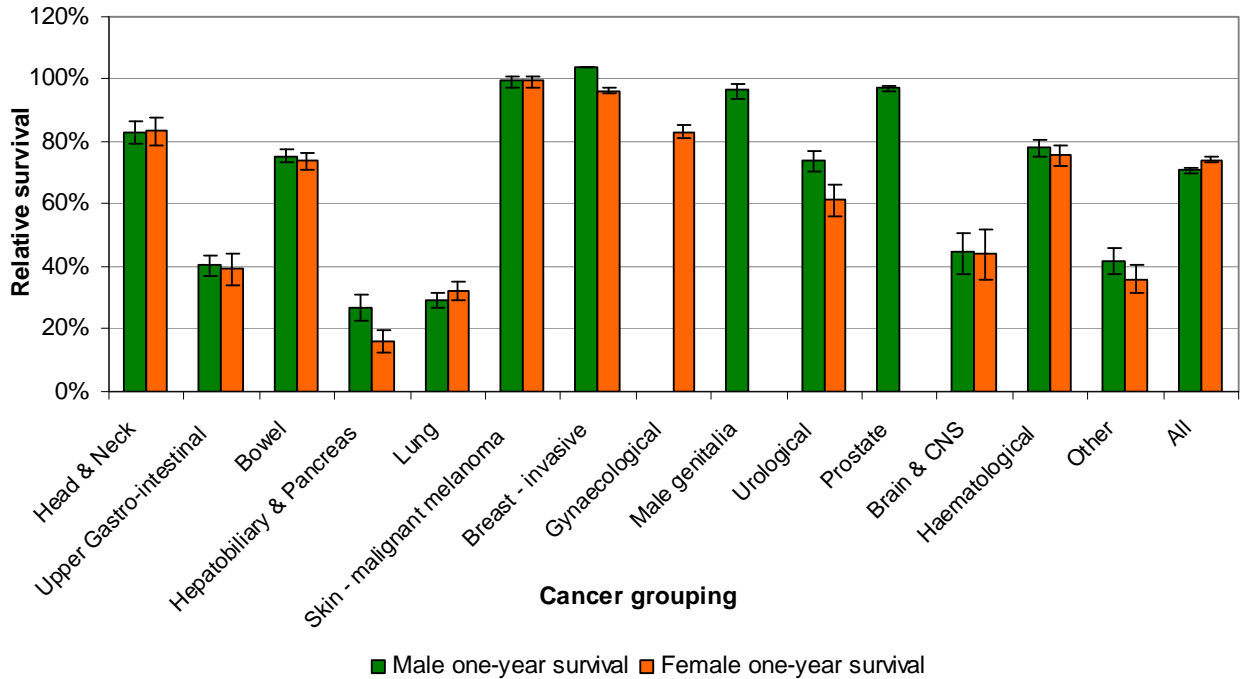
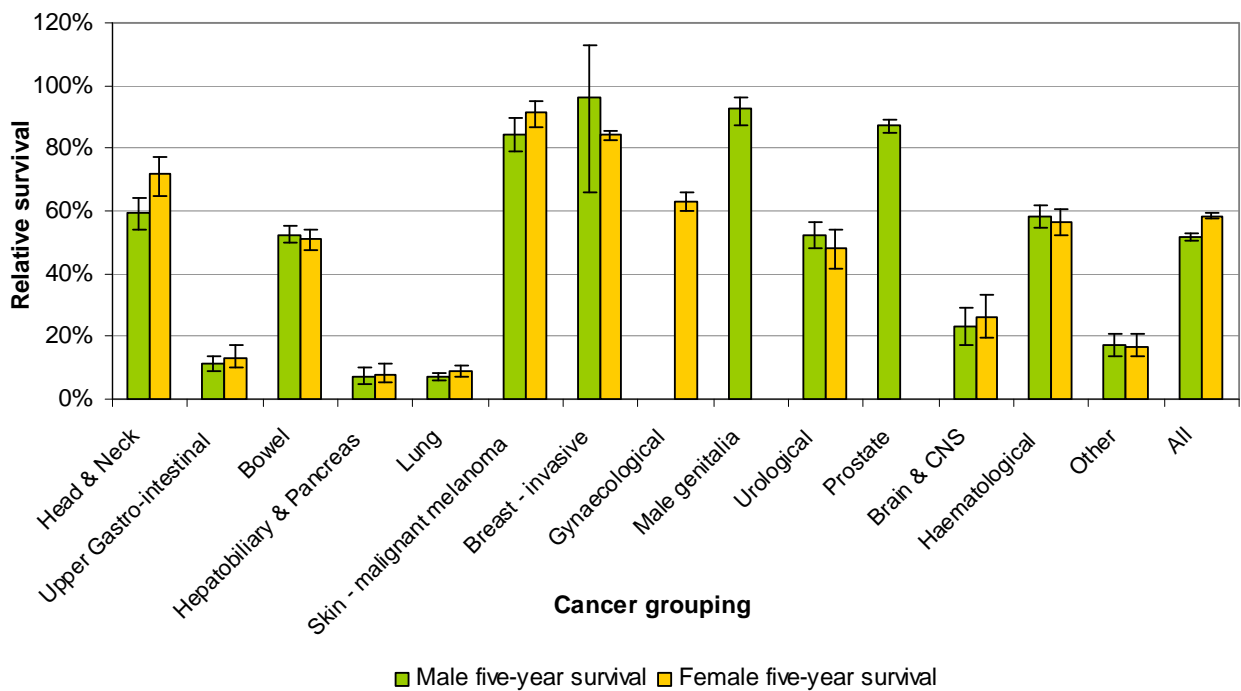


Figure 4.2: Five-year relative survival followed up to the end of 2009, West Midlands, males & females



Appendix 1: Cancer site groupings

Table A.1: Cancer site groupings used in this report⁵

Cancer site grouping	ICD-10	Cancer site
Head & Neck	C00	Lip
	C01	Base of tongue
	C02-C14	Oral cavity and pharynx
	C30	Nasal cavity and middle ear
	C31	Accessory sinuses
	C32	Larynx
	C73	Thyroid gland
Upper Gastro-intestinal (Upper GI)	C15	Oesophagus
	C16	Stomach
Bowel	C17	Small intestine
	C18	Colon
	C19	Rectosigmoid junction
	C20	Rectum
	C21	Anus and anal canal
	C26	Other and ill-defined digestive organs
	Hepatobiliary & Pancreas (HPB)	C22
C23		Gallbladder
C24		Other and unspecified parts of biliary tract
C25		Pancreas
Lung	C33	Trachea
	C34	Bronchus and lung
	C39	Other and ill-defined sites in the respiratory system and intrathoracic organs
Melanoma skin	C43	Malignant melanoma of skin
Breast - invasive	C50	Breast
Gynaecological	C51	Vulva
	C52	Vagina
	C53	Cervix uteri
	C54	Corpus uteri
	C55	Uterus, part unspecified
	C56	Ovary
	C57	Other and unspecified female genital organs
	C58	Placenta
Male genitalia	C60	Penis
	C62	Testis
	C63	Other and unspecified male genital organs
Urological	C64	Kidney
	C65	Renal pelvis
	C66	Ureter
	C67	Bladder
	C68	Other and unspecified urinary organs
Prostate	C61	Prostate
Brain & Central Nervous System (CNS)	C47	Peripheral nerves and autonomic nervous system
	C69	Eye and adnexa
	C70	Meninges
	C71	Brain
	C72	Spinal cord, cranial nerves and other parts of central nervous system
Haematological	C81-C85	Lymphoma
	C88	Immunoproliferative disease
	C90-C95	Myeloma & leukaemia
	C96	Other and unspecified lymphoid and haematopoietic tissues
Other	C40	Bone and articular cartilage of limbs
	C41	Bone and articular cartilage of other and unspecified sites
	C45	Mesothelioma
	C46	Kaposi's sarcoma
	C48	Retroperitoneum and peritoneum
	C49	Other connective and soft tissue
	C74-C75	Adrenal and other endocrine glands
	C76-C80	Ill-defined, secondary and unspecified sites
	C37	Thymus
	C38	Heart, mediastinum and pleura
	C97	Independent (primary) multiple sites

⁵ Cancer site groups have changed from the 2008 report based on discussions with coding experts, therefore statistics are not comparable between the 2008 and 2009 reports for lung and 'other' cancers.

Appendix 2: Incidence and mortality in 2009 in the West Midlands by individual ICD-10 cancer site code

Crude rates and age-standardised rates (ASR) for incidence and mortality in the following tables are per 100,000 standard European population.

Table A.2 Incidence and mortality in the West Midlands, 2009, males

ICD-10 C00-C25, West Midlands, males, 2009									
ICD-10	Cancer Site	Cases in 2009	% of cases	Crude Rate	ASR incidence	Deaths in 2009	% of deaths	Crude Rate	ASR mortality
C00	Lip	21	< 1%	0.8	0.6	2	< 1%	0.1	0.1
C01	Base of tongue	30	< 1%	1.1	1.0	4	< 1%	0.1	0.1
C02	Other and unspecified parts of tongue	66	< 1%	2.5	2.2	21	< 1%	0.8	0.7
C03	Gum	18	< 1%	0.7	0.5	3	< 1%	0.1	0.1
C04	Floor of mouth	31	< 1%	1.2	1.1	2	< 1%	0.1	0.1
C05	Palate	10	< 1%	0.4	0.3	2	< 1%	0.1	0.0
C06	Other and unspecified parts of mouth	45	< 1%	1.7	1.4	17	< 1%	0.6	0.5
C07	Parotid gland	18	< 1%	0.7	0.6	12	< 1%	0.4	0.3
C08	Other and unspecified major salivary glands	10	< 1%	0.4	0.3	0	0%	0.0	0.0
C09	Tonsil	61	< 1%	2.3	2.1	17	< 1%	0.6	0.5
C10	Oropharynx	12	< 1%	0.4	0.4	13	< 1%	0.5	0.4
C11	Nasopharynx	18	< 1%	0.7	0.7	6	< 1%	0.2	0.2
C12	Pyriiform sinus	18	< 1%	0.7	0.5	7	< 1%	0.3	0.2
C13	Hypopharynx	18	< 1%	0.7	0.6	5	< 1%	0.2	0.2
C14	Other and ill-defined sites in the lip, oral cavity and pharynx	10	< 1%	0.4	0.3	8	< 1%	0.3	0.2
C15	Oesophagus	501	4%	18.8	14.8	521	7%	19.5	15.2
C16	Stomach	466	3%	17.4	13.3	318	4%	11.9	8.7
C17	Small intestine	58	< 1%	2.2	1.8	21	< 1%	0.8	0.6
C18	Colon	1,193	9%	44.7	33.4	445	6%	16.7	12.1
C19	Rectosigmoid junction	130	< 1%	4.9	3.7	79	1%	3.0	2.2
C20	Rectum	641	5%	24.0	18.8	219	3%	8.2	6.2
C21	Anus and anal canal	28	< 1%	1.0	0.9	11	< 1%	0.4	0.3
C22	Liver and intrahepatic bile ducts	202	1%	7.6	5.9	194	3%	7.3	5.5
C23	Gallbladder	10	< 1%	0.4	0.3	10	< 1%	0.4	0.3
C24	Other and unspecified parts of biliary tract	35	< 1%	1.3	1.0	9	< 1%	0.3	0.2
C25	Pancreas	323	2%	12.1	9.4	344	5%	12.9	9.9

Table A.2 Incidence and mortality in the West Midlands, 2009, males (continued)

ICD-10 C26-C68 excl. C44, West Midlands, males, 2009									
ICD-10	Cancer Site	Cases in 2009	% of cases	Crude Rate	ASR incidence	Deaths in 2009	% of deaths	Crude Rate	ASR mortality
C26	Other and ill-defined digestive organs	24	< 1%	0.9	0.6	159	2%	6.0	4.4
C30	Nasal cavity and middle ear	9	< 1%	0.3	0.3	2	< 1%	0.1	0.1
C31	Accessory sinuses	3	< 1%	0.1	0.1	5	< 1%	0.2	0.2
C32	Larynx	153	1%	5.7	4.7	62	< 1%	2.3	1.8
C33	Trachea	1	< 1%	0.0	0.0	0	0%	0.0	0.0
C34	Bronchus and lung	1,994	14%	74.7	56.4	1,740	24%	65.1	48.5
C37	Thymus	5	< 1%	0.2	0.2	1	< 1%	0.0	0.0
C38	Heart, mediastinum and pleura	16	< 1%	0.6	0.5	5	< 1%	0.2	0.1
C39	Other and ill-defined sites in the respiratory system and intrathoracic organs	0	0%	0.0	0.0	0	0%	0.0	0.0
C40	Bone and articular cartilage of limbs	21	< 1%	0.8	0.8	1	< 1%	0.0	0.0
C41	Bone and articular cartilage of other and unspecified sites	18	< 1%	0.7	0.6	19	< 1%	0.7	0.6
C43	Malignant melanoma of skin	463	3%	17.3	14.7	103	1%	3.9	3.0
C45	Mesothelioma	133	< 1%	5.0	3.8	81	1%	3.0	2.2
C46	Kaposi's sarcoma	4	< 1%	0.1	0.2	1	< 1%	0.0	0.0
C47	Peripheral nerves and autonomic nervous system	4	< 1%	0.1	0.1	2	< 1%	0.1	0.1
C48	Retroperitoneum and peritoneum	14	< 1%	0.5	0.4	3	< 1%	0.1	0.1
C49	Other connective and soft tissue	75	< 1%	2.8	2.4	38	< 1%	1.4	1.2
C50	Breast	28	< 1%	1.0	0.9	5	< 1%	0.2	0.1
C60	Penis	51	< 1%	1.9	1.5	15	< 1%	0.6	0.4
C61	Prostate	3,610	26%	135.2	103.8	951	13%	35.6	24.1
C62	Testis	210	1%	7.9	8.2	7	< 1%	0.3	0.3
C63	Other and unspecified male genital organs	5	< 1%	0.2	0.2	0	0%	0.0	0.0
C64	Kidney	360	3%	13.5	10.9	199	3%	7.5	5.8
C65	Renal pelvis	46	< 1%	1.7	1.3	1	< 1%	0.0	0.0
C66	Ureter	23	< 1%	0.9	0.6	3	< 1%	0.1	0.1
C67	Bladder	626	4%	23.4	17.3	297	4%	11.1	7.8
C68	Other and unspecified urinary organs	10	< 1%	0.4	0.3	3	< 1%	0.1	0.1

Table A.2 Incidence and mortality in the West Midlands, 2009, males (continued)⁶

ICD-10 C69-C97, West Midlands, males, 2009									
ICD-10	Cancer Site	Cases in 2009	% of cases	Crude Rate	ASR incidence	Deaths in 2009	% of deaths	Crude Rate	ASR mortality
C69	Eye and adnexa	6	< 1%	0.2	0.2	3	< 1%	0.1	0.1
C70	Meninges	4	< 1%	0.1	0.1	0	0%	0.0	0.0
C71	Brain	228	2%	8.5	7.4	199	3%	7.5	6.1
C72	Spinal cord, cranial nerves and other parts of central nervous system	8	< 1%	0.3	0.3	0	0%	0.0	0.0
C73	Thyroid gland	58	< 1%	2.2	2.0	10	< 1%	0.4	0.3
C74	Adrenal Gland	5	< 1%	0.2	0.2	3	< 1%	0.1	0.1
C75	Other endocrine glands and related structures	3	< 1%	0.1	0.1	4	< 1%	0.1	0.1
C76	Other and ill-defined sites	6	< 1%	0.2	0.2	15	< 1%	0.6	0.4
C77	Secondary and unspecified malignant neoplasm of lymph nodes	61	< 1%	2.3	1.9	0	0%	0.0	0.0
C78	Secondary and unspecified malignant neoplasm of respiratory and digestive organs	128	< 1%	4.8	3.5	16	< 1%	0.6	0.4
C79	Secondary and unspecified malignant neoplasm of other sites	50	< 1%	1.9	1.4	7	< 1%	0.3	0.2
C80	Malignant neoplasm without specification of site	226	2%	8.5	6.1	409	6%	15.3	11.1
C81	Hodgkin's disease	95	< 1%	3.6	3.4	11	< 1%	0.4	0.3
C82	Follicular non-Hodgkin's lymphoma	86	< 1%	3.2	2.7	3	< 1%	0.1	0.1
C83	Diffuse non-Hodgkin's lymphoma	299	2%	11.2	9.2	26	< 1%	1.0	0.7
C84	Peripheral and cutaneous T-cell lymphomas	35	< 1%	1.3	1.1	16	< 1%	0.6	0.5
C85	Other and unspecified types of non-Hodgkin's lymphoma	114	< 1%	4.3	3.4	160	2%	6.0	4.3
C88	Malignant immunoproliferative diseases	19	< 1%	0.7	0.5	9	< 1%	0.3	0.2
C90	Multiple myeloma and malignant plasma cell neoplasms	228	2%	8.5	6.4	119	2%	4.5	3.2
C91	Lymphoid leukaemia	165	1%	6.2	5.1	82	1%	3.1	2.3
C92	Myeloid leukaemia	175	1%	6.6	5.3	136	2%	5.1	3.8
C93	Monocytic leukaemia	5	< 1%	0.2	0.1	2	< 1%	0.1	0.0
C94	Other leukaemias of specified cell type	2	< 1%	0.1	0.1	0	0%	0.0	0.0
C95	Leukaemia of unspecified cell type	12	< 1%	0.4	0.4	14	< 1%	0.5	0.4
C96	Other and unspecified malignant neoplasms of lymphoid, haematopoietic and related tissue	114	< 1%	4.3	3.2	1	< 1%	0.0	0.0
C97	Malignant neoplasms of independent (primary) multiple sites	0	0%	0.0	0.0	67	< 1%	2.5	1.8
C00-C97 excl. C44	All invasive malignant neoplasms, excluding non-melanoma skin cancer	14,011	100%	524.5	410.2	7,305	100%	273.5	202.4

⁶ Different coding methods between cancer registries and ONS who supply mortality data, result in notable differences for C97 cases.

Table A.3 Incidence and mortality in the West Midlands, 2009, females

ICD-10 C00-C30, West Midlands, females									
ICD-10	Cancer Site	Cases in 2009	% of cases	Crude Rate	ASR incidence	Deaths in 2009	% of deaths	Crude Rate	ASR mortality
C00	Lip	7	< 1%	0.3	0.1	1	< 1%	0.0	0.0
C01	Base of tongue	6	< 1%	0.2	0.2	0	0%	0.0	0.0
C02	Other and unspecified parts of tongue	45	< 1%	1.6	1.4	16	< 1%	0.6	0.4
C03	Gum	14	< 1%	0.5	0.4	5	< 1%	0.2	0.1
C04	Floor of mouth	13	< 1%	0.5	0.4	3	< 1%	0.1	0.1
C05	Palate	17	< 1%	0.6	0.5	1	< 1%	0.0	0.0
C06	Other and unspecified parts of mouth	20	< 1%	0.7	0.5	10	< 1%	0.4	0.2
C07	Parotid gland	15	< 1%	0.5	0.5	6	< 1%	0.2	0.2
C08	Other and unspecified major salivary glands	4	< 1%	0.1	0.1	1	< 1%	0.0	0.0
C09	Tonsil	27	< 1%	1.0	0.9	1	< 1%	0.0	0.0
C10	Oropharynx	2	< 1%	0.1	0.1	5	< 1%	0.2	0.1
C11	Nasopharynx	5	< 1%	0.2	0.2	4	< 1%	0.1	0.2
C12	Pyiform sinus	5	< 1%	0.2	0.1	0	0%	0.0	0.0
C13	Hypopharynx	8	< 1%	0.3	0.2	4	< 1%	0.1	0.1
C14	Other and ill-defined sites in the lip, oral cavity and pharynx	3	< 1%	0.1	0.1	5	< 1%	0.2	0.2
C15	Oesophagus	257	2%	9.3	5.8	204	3%	7.4	4.3
C16	Stomach	226	2%	8.2	4.8	165	3%	6.0	3.4
C17	Small intestine	48	< 1%	1.7	1.3	15	< 1%	0.5	0.3
C18	Colon	1,073	8%	38.9	24.9	422	7%	15.3	8.7
C19	Rectosigmoid junction	96	< 1%	3.5	2.1	44	< 1%	1.6	0.9
C20	Rectum	414	3%	15.0	10.3	167	3%	6.1	3.5
C21	Anus and anal canal	49	< 1%	1.8	1.5	18	< 1%	0.7	0.5
C22	Liver and intrahepatic bile ducts	142	1%	5.1	3.2	165	3%	6.0	3.6
C23	Gallbladder	44	< 1%	1.6	0.9	33	< 1%	1.2	0.6
C24	Other and unspecified parts of biliary tract	42	< 1%	1.5	1.0	9	< 1%	0.3	0.2
C25	Pancreas	340	3%	12.3	7.5	360	6%	13.0	7.7
C26	Other and ill-defined digestive organs	31	< 1%	1.1	0.6	142	2%	5.1	2.9
C30	Nasal cavity and middle ear	3	< 1%	0.1	0.1	1	< 1%	0.0	0.0

Table A.3 Incidence and mortality in the West Midlands, 2009, females (continued)

ICD-10 C31-C67 excl.C44, West Midlands, females									
ICD-10	Cancer Site	Cases in 2009	% of cases	Crude Rate	ASR incidence	Deaths in 2009	% of deaths	Crude Rate	ASR mortality
C31	Accessory sinuses	3	< 1%	0.1	0.1	3	< 1%	0.1	0.1
C32	Larynx	33	< 1%	1.2	0.9	10	< 1%	0.4	0.2
C33	Trachea	0	0%	0.0	0.0	0	0%	0.0	0.0
C34	Bronchus and lung	1,364	10%	49.4	33.4	1,135	18%	41.1	26.3
C37	Thymus	2	< 1%	0.1	0.1	0	0%	0.0	0.0
C38	Heart, mediastinum and pleura	6	< 1%	0.2	0.1	5	< 1%	0.2	0.2
C39	Other and ill-defined sites in the respiratory system and intrathoracic organs	0	0%	0.0	0.0	0	0%	0.0	0.0
C40	Bone and articular cartilage of limbs	11	< 1%	0.4	0.4	3	< 1%	0.1	0.1
C41	Bone and articular cartilage of other and unspecified sites	2	< 1%	0.1	0.1	8	< 1%	0.3	0.2
C43	Malignant melanoma of skin	443	3%	16.1	12.9	78	1%	2.8	2.1
C45	Mesothelioma	24	< 1%	0.9	0.5	17	< 1%	0.6	0.4
C46	Kaposi's sarcoma	2	< 1%	0.1	0.1	0	0%	0.0	0.0
C47	Peripheral nerves and autonomic nervous system	3	< 1%	0.1	0.1	1	< 1%	0.0	0.0
C48	Retroperitoneum and peritoneum	41	< 1%	1.5	1.3	18	< 1%	0.7	0.5
C49	Other connective and soft tissue	57	< 1%	2.1	1.7	34	< 1%	1.2	0.9
C50	Breast	4,222	32%	153.0	122.8	1,075	17%	38.9	26.2
C51	Vulva	107	< 1%	3.9	2.6	31	< 1%	1.1	0.6
C52	Vagina	23	< 1%	0.8	0.5	9	< 1%	0.3	0.2
C53	Cervix uteri	309	2%	11.2	11.0	80	1%	2.9	2.1
C54	Corpus uteri	706	5%	25.6	19.9	118	2%	4.3	2.8
C55	Uterus, part unspecified	24	< 1%	0.9	0.6	41	< 1%	1.5	1.0
C56	Ovary	548	4%	19.9	15.0	365	6%	13.2	8.8
C57	Other and unspecified female genital organs	38	< 1%	1.4	0.9	10	< 1%	0.4	0.2
C58	Placenta	1	< 1%	0.0	0.0	0	0%	0.0	0.0
C64	Kidney	250	2%	9.1	6.4	115	2%	4.2	2.6
C65	Renal pelvis	16	< 1%	0.6	0.3	1	< 1%	0.0	0.0
C66	Ureter	17	< 1%	0.6	0.4	7	< 1%	0.3	0.1
C67	Bladder	239	2%	8.7	5.1	148	2%	5.4	2.9

Table A.3 Incidence and mortality in the West Midlands, 2009, females (continued)⁷

ICD-10 C68-C97, West Midlands, females									
ICD-10	Cancer Site	Cases in 2009	% of cases	Crude Rate	ASR incidence	Deaths in 2009	% of deaths	Crude Rate	ASR mortality
C68	Other and unspecified urinary organs	5	< 1%	0.2	0.1	7	< 1%	0.3	0.2
C69	Eye and adnexa	6	< 1%	0.2	0.2	2	< 1%	0.1	0.1
C70	Meninges	7	< 1%	0.3	0.2	5	< 1%	0.2	0.1
C71	Brain	168	1%	6.1	4.7	139	2%	5.0	3.6
C72	Spinal cord, cranial nerves and other parts of central nervous system	3	< 1%	0.1	0.1	0	0%	0.0	0.0
C73	Thyroid gland	131	< 1%	4.7	4.4	17	< 1%	0.6	0.4
C74	Adrenal Gland	8	< 1%	0.3	0.2	10	< 1%	0.4	0.3
C75	Other endocrine glands and related structures	2	< 1%	0.1	0.0	2	< 1%	0.1	0.0
C76	Other and ill-defined sites	19	< 1%	0.7	0.5	25	< 1%	0.9	0.4
C77	Secondary and unspecified malignant neoplasm of lymph nodes	42	< 1%	1.5	1.2	0	0%	0.0	0.0
C78	Secondary and unspecified malignant neoplasm of respiratory and digestive organs	146	1%	5.3	3.3	23	< 1%	0.8	0.4
C79	Secondary and unspecified malignant neoplasm of other sites	45	< 1%	1.6	1.0	10	< 1%	0.4	0.2
C80	Malignant neoplasm without specification of site	280	2%	10.1	5.4	468	7%	17.0	9.5
C81	Hodgkin's disease	57	< 1%	2.1	2.0	8	< 1%	0.3	0.2
C82	Follicular non-Hodgkin's lymphoma	88	< 1%	3.2	2.6	6	< 1%	0.2	0.2
C83	Diffuse non-Hodgkin's lymphoma	200	2%	7.2	5.1	20	< 1%	0.7	0.5
C84	Peripheral and cutaneous T-cell lymphomas	19	< 1%	0.7	0.5	13	< 1%	0.5	0.3
C85	Other and unspecified types of non-Hodgkin's lymphoma	123	< 1%	4.5	3.0	146	2%	5.3	3.1
C88	Malignant immunoproliferative diseases	8	< 1%	0.3	0.2	4	< 1%	0.1	0.1
C90	Multiple myeloma and malignant plasma cell neoplasms	172	1%	6.2	3.9	104	2%	3.8	2.0
C91	Lymphoid leukaemia	116	< 1%	4.2	3.1	41	< 1%	1.5	0.9
C92	Myeloid leukaemia	134	1%	4.9	3.3	116	2%	4.2	2.7
C93	Monocytic leukaemia	1	< 1%	0.0	0.0	1	< 1%	0.0	0.0
C94	Other leukaemias of specified cell type	2	< 1%	0.1	0.0	1	< 1%	0.0	0.0
C95	Leukaemia of unspecified cell type	9	< 1%	0.3	0.2	11	< 1%	0.4	0.2
C96	Other and unspecified malignant neoplasms of lymphoid, haematopoietic and related tissue	81	< 1%	2.9	1.8	1	< 1%	0.0	0.0
C97	Malignant neoplasms of independent (primary) multiple sites	0	0%	0.0	0.0	41	< 1%	1.5	0.8
C00-C97 excl. C44	All invasive malignant neoplasms, excluding non-melanoma skin cancer	13,319	100%	482.6	353.9	6,340	100%	229.7	142.5

⁷ Different coding methods between cancer registries and ONS who supply mortality data, result in notable differences for C97 cases.